

# SPEC SHEET + MEASUREMENTS



OGIO® Flash Jacket. OE711

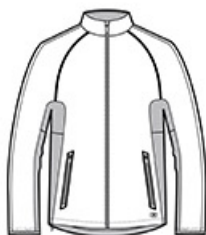
## Product photo



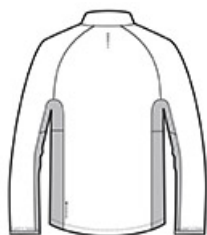
ALLOVER REFLECTION  
WATER-RESISTANT  
WIND-RESISTANT  
DESIGNED FOR DAY-INTO-NIGHT ACTIVE PURSUITS LIKE  
RUNNING & CYCLING

- 100% poly shell with mesh lining
- Reflective OGIO heat transfer label for tag-free comfort
- Zip-through cadet collar
- Reverse coil zippers with locking pulls
- Contrast stacked O heat transfer at center back
- Raglan sleeves
- Elastic cuffs
- Front zippered pockets with heat transfer welding details
- Embroidery access pocket
- Slight drop tail hem with drawcord and toggle for adjustability
- Contrast O heat transfer at front left hem

## Sketches



front



back

## CARE INSTRUCTIONS

Machine wash cold separately, delicate cycle. Hang to dry. Do not bleach. Do not iron. Do not dry clean.

# SPEC SHEET + MEASUREMENTS



OGIO® Flash Jacket. OE711

## PRODUCT MEASUREMENTS

	XS	S	M	L	XL	2XL	3XL	4XL
Chest	20	21 1/2	23	24 1/2	26	27 1/2	29 1/2	31 1/2
Body Length at Back	27 1/2	28 1/2	29 1/2	30 1/2	31 1/2	32 1/2	33	33 1/2
Sleeve Length from Center Back	34 3/4	35 1/2	36 1/4	37	37 3/4	38 1/2	39 1/4	40

**Chest:** Measured across the chest one inch below armhole when laid flat.

**Body Length at Back:** Measured from high point shoulder to finished hem at back.

**Sleeve Length from Center Back:** Measure from Center Back neck to shoulder point to sleeve hem.

## SIZE CHARTS

	XS	S	M	L	XL	2XL	3XL	4XL
Chest	32-34	35-37	38-40	41-43	44-46	47-49	50-53	54-57

# SPEC SHEET + MEASUREMENTS



OGIO® Flash Jacket. OE711

## HOW TO MEASURE

---



### CHEST

Measure under the arm and around the fullest part of the chest with arms down, keeping tape horizontal.

## COLORS

---



Reflective/  
Blacktop